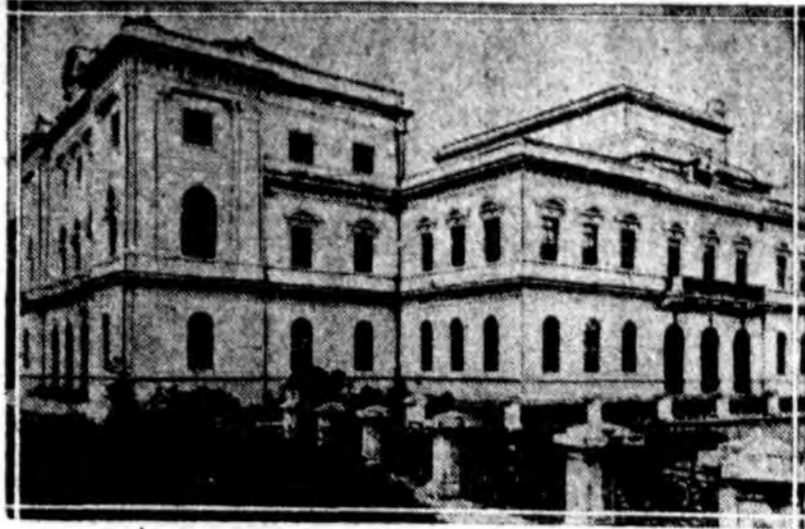
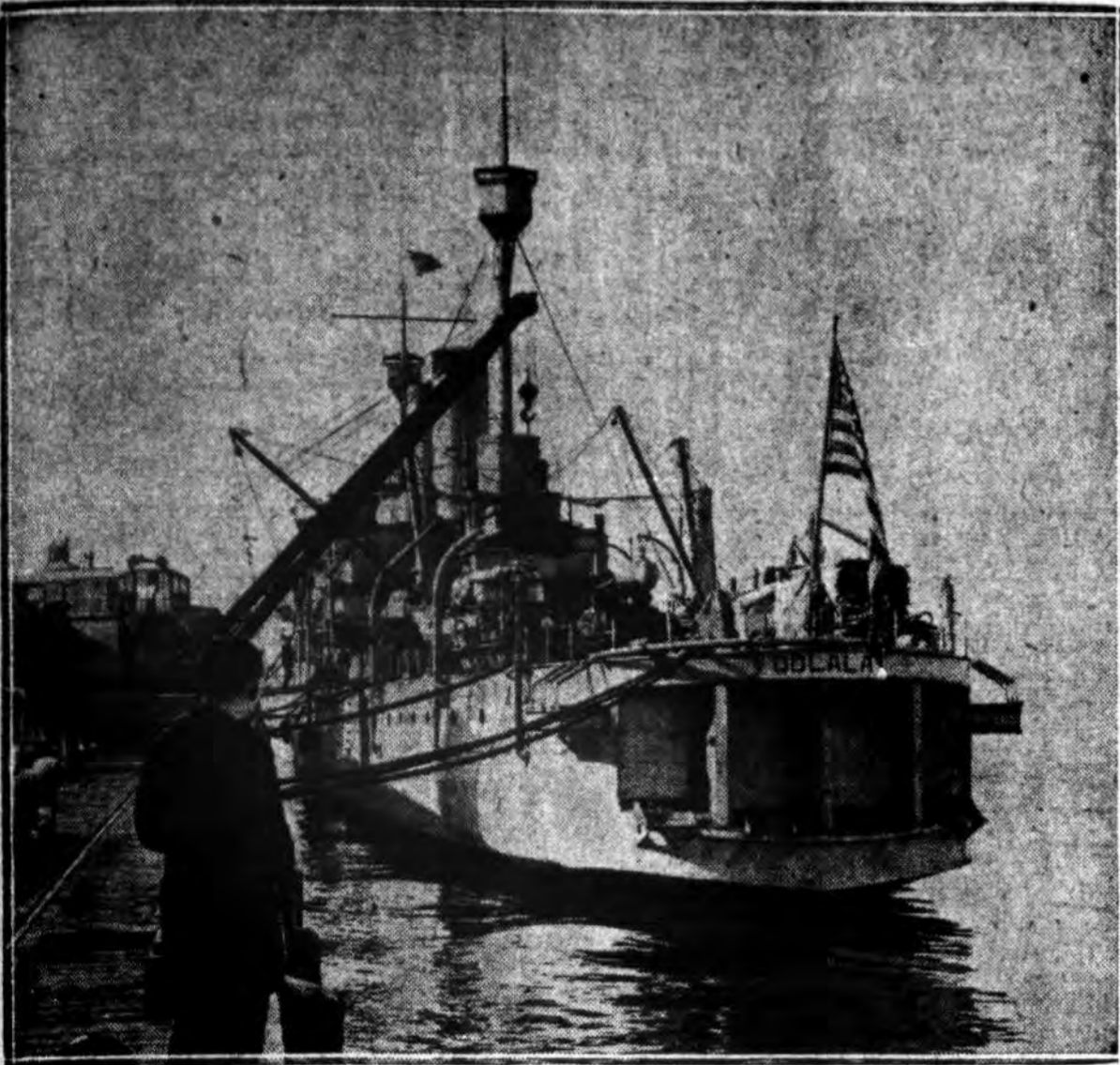


NEWS OF THE WORLD TOLD IN PICTURES



LINDBERGH ARRIVES AT PANAMA

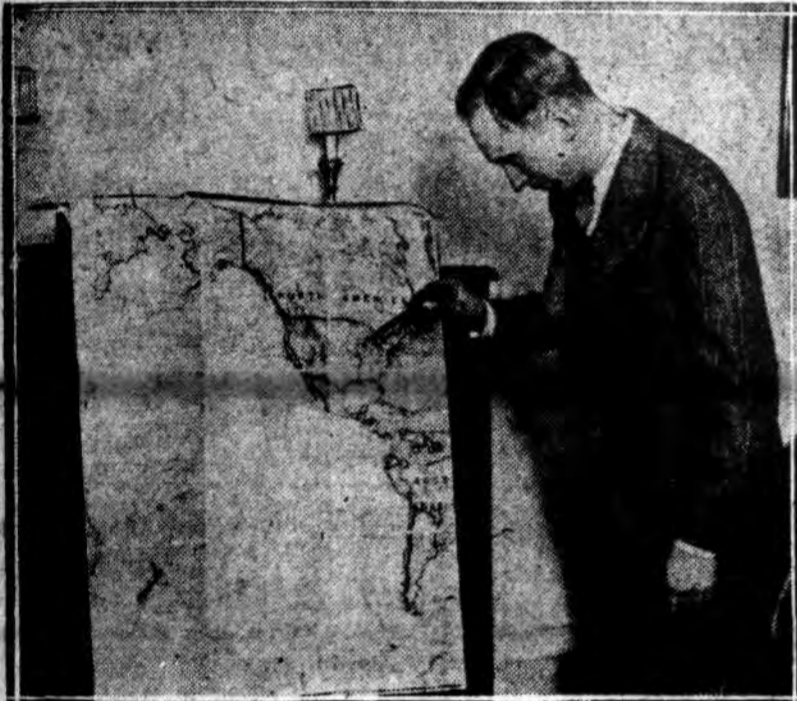
Above is a view of the presidential palace at Panama City, Panama, where Colonel Lindbergh is being entertained by President Chiari after his flight from Costa Rica. The map shows the route followed by the "aerial ambassador."

BIG GALLERY

Sees Gene Sarazen win Miami open championship under the palm trees of Florida.

LOOKS LIKE BUSINESS

The U. S. S. Oglala being loaded with supplies at Hampton Roads in preparation for departure for Nicaragua with five hundred Marines on board. The vessel is commanded by Captain W. S. Pye.



PREPARING FOR AIR TOUR

Clarence D. Chamberlin, transatlantic pilot, is seen studying the route which he will take in his forthcoming tour with a "flier" plane.



NOVEL ICE POLO PLAYED AT WENONAH MILITARY ACADEMY

The picture shows an exciting moment during the "ice polo" game between members of the regular polo team and the substitute team of Wenonah Military Academy at Wenonah, New Jersey. Saw bucks are used instead of horses and with telling effect.



MISS CAROLINE REMAK

Elected chairman of the board of managers of the Workman Place Neighborhood House, 754 South Front street. Miss Remak assumes the chairmanship formerly held by Mrs. Alexander Coxe Yarnall.



"VOICE FROM THE SKY" STARTLES PHILADELPHIA CROWDS

Above is the Old Gold Cigarette plane photographed at the Philadelphia Airport. It was from this plane that crowds in downtown Philadelphia heard music and "a thunders voice from the sky" broadcast over the city by means of powerful amplifiers fitted into the fuselage of the craft.



GUIDING THE HAND OF CHARITY

Mrs. A. G. Ettelman, assistant chairman of the Hebrew Ladies' Aid Society of West Philadelphia, who are giving a charity benefit dance at the Benjamin Franklin Hotel tomorrow evening.



ALL PACKED

Members of the Eleventh Marines at Norfolk ready for embarkation for Nicaragua.



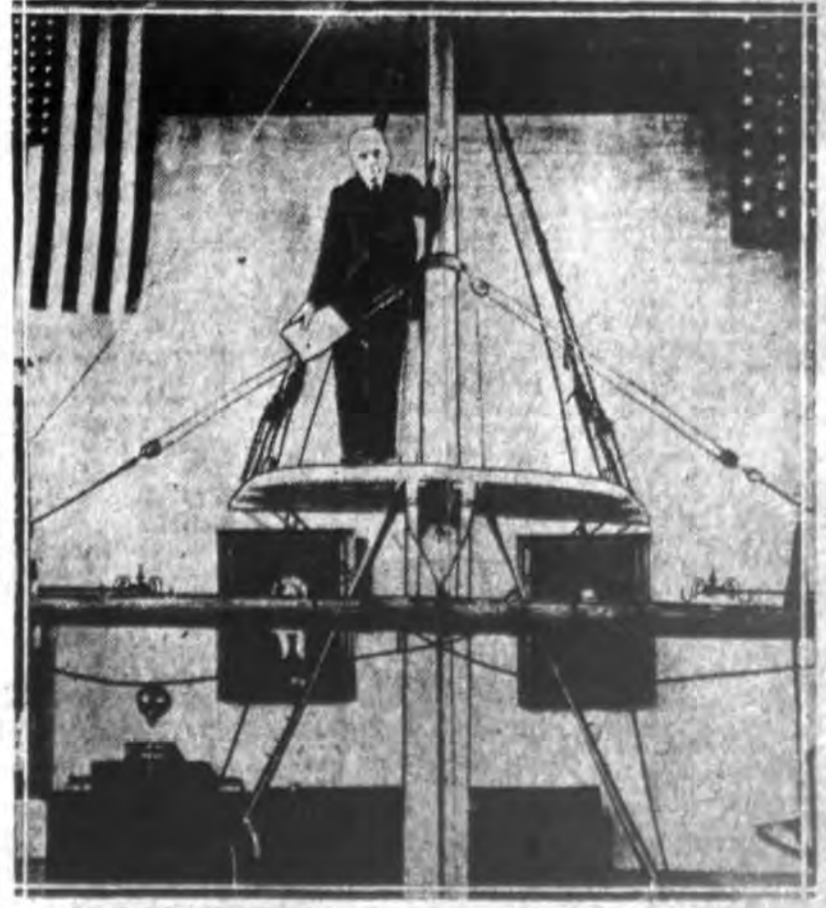
AS THE FLOOD SWEEPS THE LONDON DISTRICT

A flooded field near Shepperton, on the outskirts of London, after the recent blizzard that swept over England and precipitated a flood that had its culmination during the past week-end in the inundation of a great part of London.



FIRST AMERICAN WOMEN VISIT INTERIOR OF TRIPOLITANIA

Miss Helen Lloyd Preston (left) and Miss D. Quincy Smith, the first American women to visit the interior of Tripolitania, are seen wearing the uniform of the Second Squadron of Mehansti, crack Italian troops mounted on camels.



OLD MASTHEAD PULPIT TO COME DOWN

Rev. Charles S. Thurber, pastor of the Bethel Chapel at New Bedford, Mass., photographed on the ancient masthead pulpit that has been ordered removed by the board of directors. The church is noted for its sea-faring congregation.

